



VERSACOURT REBOUNDER INSTALLATION INSTRUCTIONS 10X10 IN-LINE



REBOUNDER ASSEMBLY (10) INSTALLATION INSTRUCTIONS



PARTS LIST

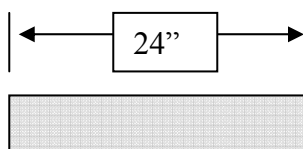
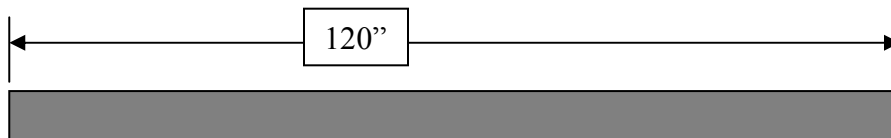
ITEM	PART NUMBER	DESCRIPTION	QUANTITY
1	VF-FEN10-8	SINGLE SOCKET TEE	2
3	VF-FEN15-8	90 ELBOW	2
A	VF-FENP12	BLACK FENCE POLE 12 FT	2
B	VF-FENP10	BLACK FENCE POLE 10 FT	2
GS	VF-FENGSS2	PVC GROUND SLEEVE	2
N	VF-REBNET1010	REBOUND NET 10X10 (8'6" X 8'6")	1
BC	VF-REBBUNG	BUNGEE CORDS WITH HOOKS	25
AS	VF-REBSTRAP	STRAPS	11
SK	VF-REBSKIRT10-B	REBOUND SKIRT WITH TIES 10X10 BLACK	1
TS	VF-TSB	TIE STRAPS BLACK	10
WS	VF-FENTNS	TENNIS WEBBING STRAP	1



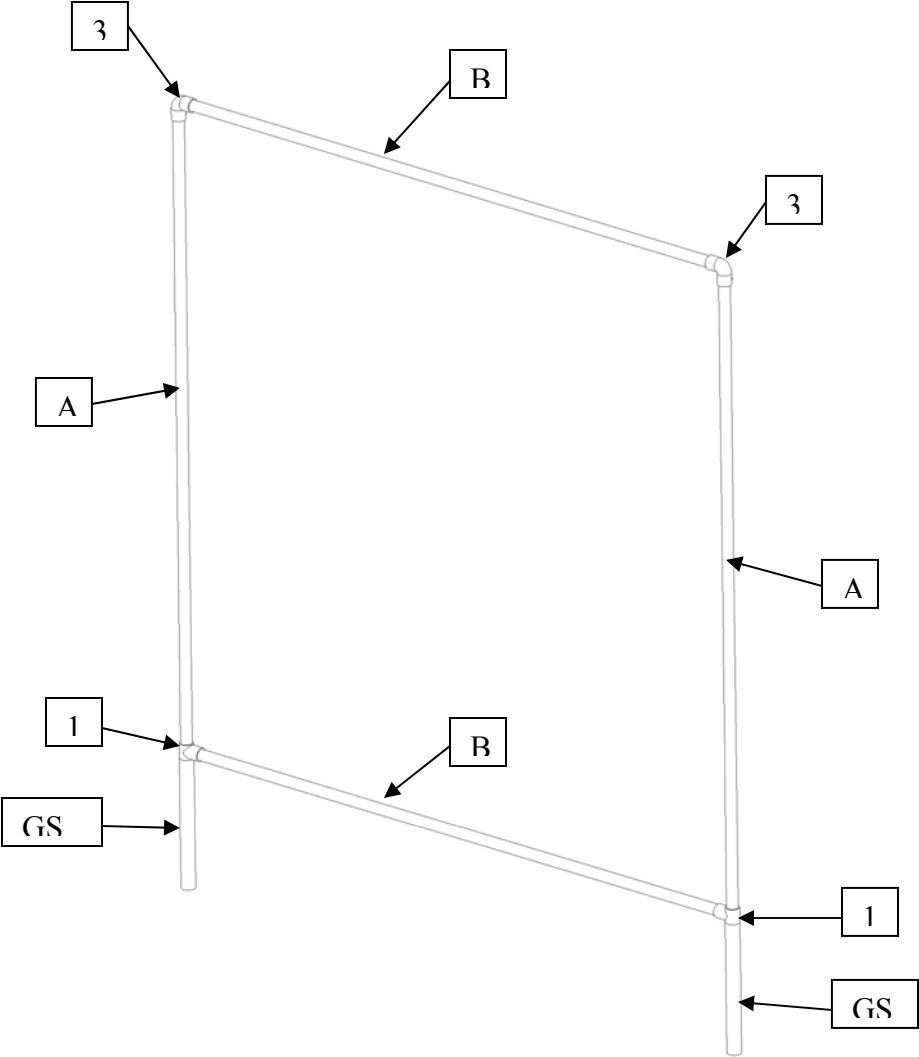
1



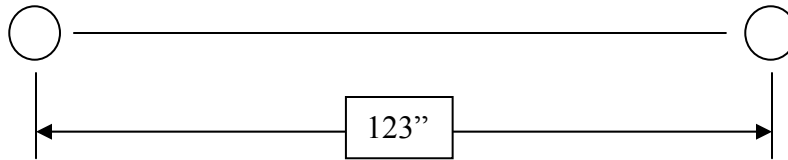
3



Stand Alone Rebounder Frame Assembly

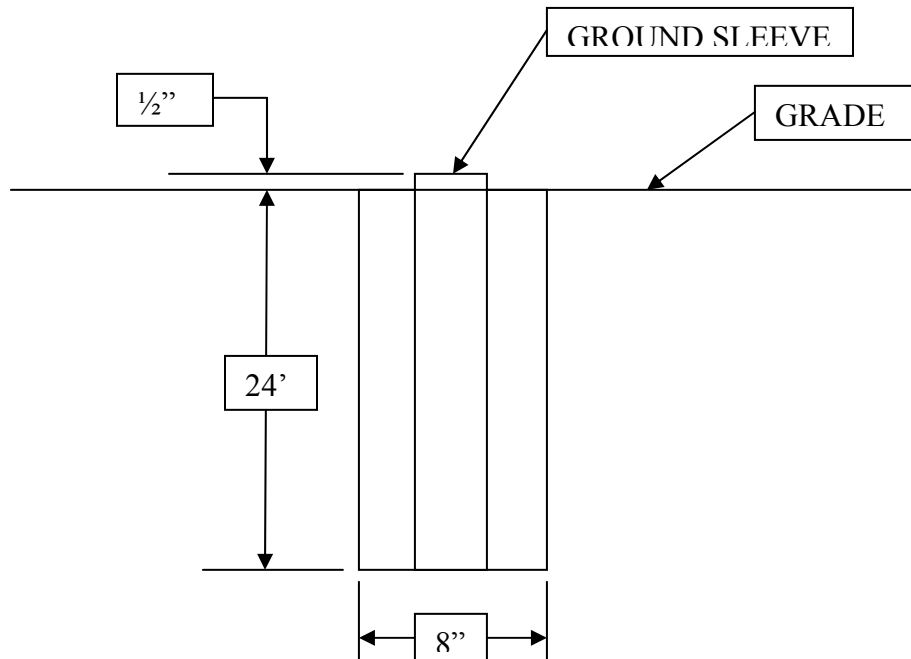


Ground Sleeve Location and Installation



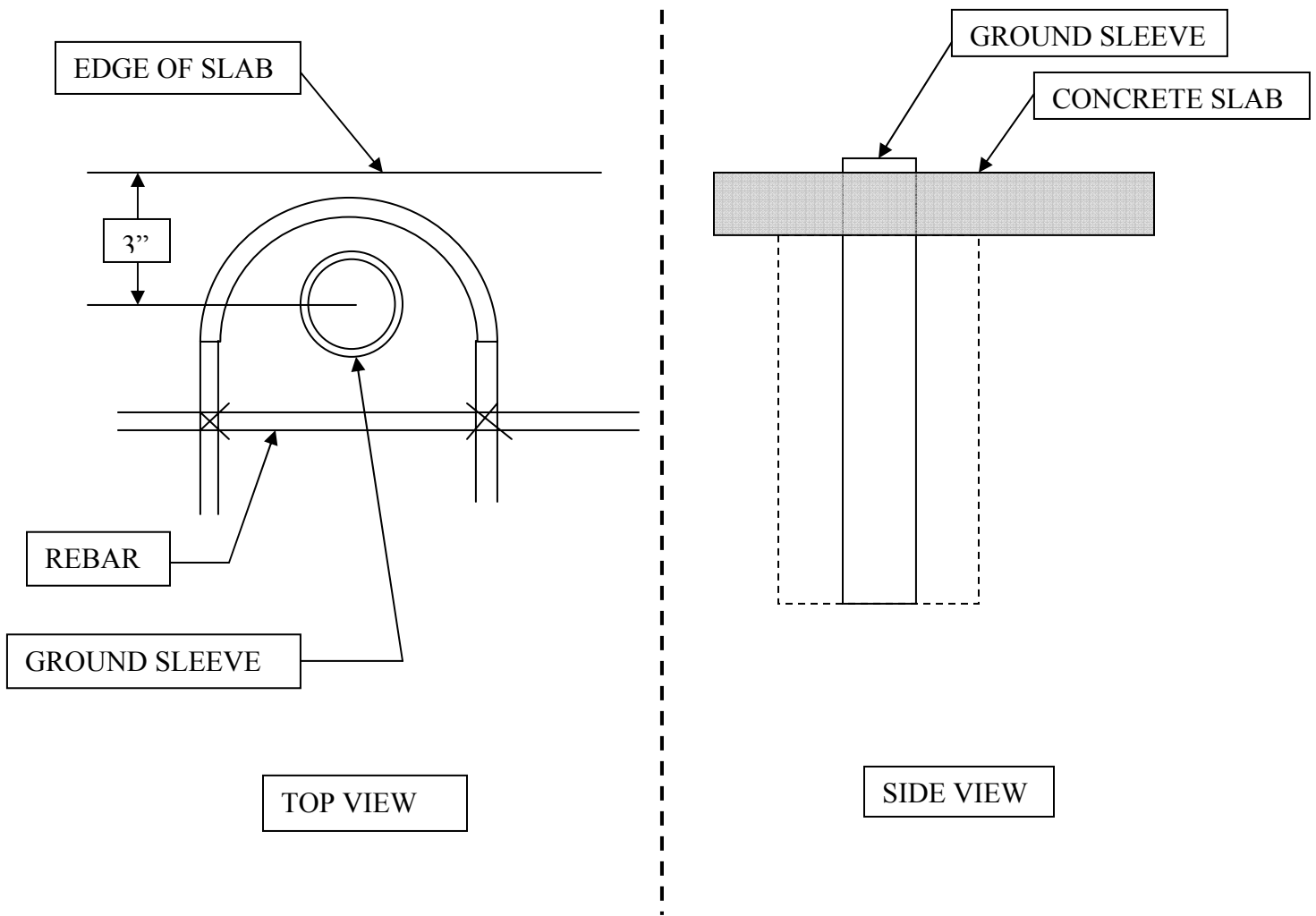
OUTSIDE OF CONCRETE SLAB

The first step to installing the vertical post ground sleeve (P.N. VF-FENG2) is to dig the hole. Hole location is critical so follow the template above. Prepare a hole with a minimum size of 8" diameter x 24" deep. Plug the bottom end of the ground sleeve to prevent concrete from filling the sleeve. Plastic plus or duct tape work well for this. Next, drop the sleeve into the hole and begin to fill with concrete. When the hole is about half full of concrete, check to see that the sleeve is in the proper location. Also at this time insert a 2" piece of pipe into the sleeve and use a level to make sure it is perfectly vertical. A sleeve that is not in the ground straight means that the vertical post will not be straight. Make sure the sleeve is at least 1/2" above the surface. This will help to keep the water out. If installing several sleeves in a line, make sure the top of the sleeves are all set at the same height. Finish filling the hole with concrete and check again for location and straightness.



INSIDE CONCRETE SLAB

The steps are the same as above with a few minor exceptions. After the forms for the slab have been set, find the locations and dig the holes for all of the ground sleeves. From here there are two ways to complete the process. One is to set the ground sleeves at the same time the slab is poured. This can save time but make sure you are prepared before you start. The other method is to preset the sleeves before the slab is poured. Only fill the holes about half way with concrete, just enough to hold them in the proper location. Then when the slab is poured the rest of the hole is filled.



REBOUNDER INSTALLATION STEPS

- 1. Install 2 ground sleeves as shown and described above.** Wait at least 24 hours for the concrete to cure before assembling the rebounder.
- 2. Assemble the frame.** Slide the two vertical posts (A) into the ground sleeves. Slide the tee fittings (1) over the posts and let them rest on the ground. Slide the elbow fitting (3) onto the two end posts and lock into place using the set screw. Check to see that the dimension between the top fitting and the bottom fitting is 10'. If it is less than 10', raise the posts and tighten the set screw in the tee fitting at the bottom to hold it in place. If it is more than 10', then the vertical posts must be cut off. Beginning at the bottom, install the two horizontal posts (B). Make sure all set screws are tight.
- 3. Assemble net to frame.** First, use 2 each bungee cords to attach the top right hand corner of the net to the frame. Hook the bungee cord thru the metal ring and over the top of the frame and back to the metal ring. The second bungee cord also attaches to the metal ring and wraps around the side pole. Use the same procedure for the upper left hand corner of the net. Next, use an adjustable strap thru the ring in the bottom right hand corner of the net and loop it around the bottom horizontal pole. Take another strap and go thru the ring and around the side pole. Leave slack in the straps, do not tighten at this point. Follow the same procedure for the lower left hand corner. Now that all four corners are fastened, begin installing the rest of the bungee cords. Along the top and two sides, attach the net to the frame using the bungee cords spaced every 17-18 mesh square of the net (which is approximately 13"). There will be a total of 9 bungee cords used across the top and 8 on each side. Add the adjustable straps across the bottom. Install the straps every 17-18 mesh of the net (approximately 13 inches). Tighten the straps until the net is about 7" from the bottom horizontal pipe. The straps can be tightened further if desired to create more tension.



- 4. Install Tennis net webbing.** Weave the white strapping into the net 36 inches from the playing surface. This simulates the height of the Tennis net.



- 5. Install Ball Containment skirt.** The ball containment skirt is attached to the open area at the bottom of the net with the tie straps. The brass eyelets go up. This keeps balls from passing beyond the rebounder.

