



# VERSACOURT TILE INSTALLATION INSTRUCTIONS



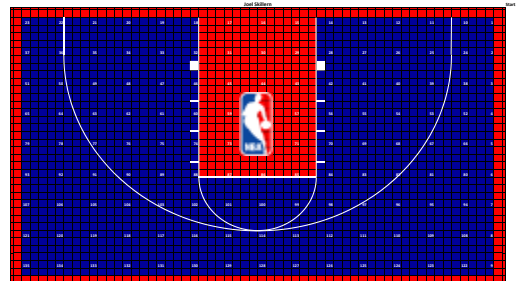
## INTRODUCTION

### CONGRATULATIONS ON YOUR NEW VERSACOURT

Thank you for purchasing your VersaCourt tile system. VersaCourt is a suspended tile surface attached together with a special latching mechanism that snaps together easily. To ensure a trouble-free installation, certain guidelines must be followed

### THE VERSACOURT DIY DIFFERENCE

Your custom court was fully assembled in our warehouse and all requested lines and logos were pre-painted by our team of professionals in a controlled environment to ensure accuracy and longevity. We then numbered each section, disassembled your court, and packed the tiles according to your numbered diagram. This process makes your VersaCourt DIY installation simple. However, if you have questions or need assistance during the assembly of your court please call us at 800-540-4899.



## THINGS TO KNOW

### ABOUT VERSACOURT TILES:

A VersaCourt game court is made up of tiles, each measuring 10.13" square. These tiles are connected by a simple, but precise interlocking mechanism. The picture shows the hook side and the receiver sides of the tile. (See image 1)

### EXPANSION:

VersaCourt tile is a polypropylene plastic floor, which expands and contracts with temperature changes. A 100' floor can expand 2" on both sides lengthwise when the weather warms up to 100°F (37°C). For this reason, it is important that the tile be trimmed at least 1/2" from any stationary object such as a goal post or fence post. Tips on trimming your tile are outlined on Page 5. (See image 2)

### SUBSURFACE PREPARATION:

It is important that the surface of the substructure enables the VersaCourt to expand and contract. Asphalt, being oil based and rough, is inherently slippery and makes a very good subsurface, as well as a rough (medium broom) cement finish. If the tiles expand without being able to slide, it will start to buckle in various portions of your court.

VersaCourt can be laid over structural cracks (no wider than 1/2") in the subsurface. Sharp cracks should be faceted or rounded so that the ball bounce is consistent and the tiles don't "catch" when the floor expands and contracts. (See image 3)

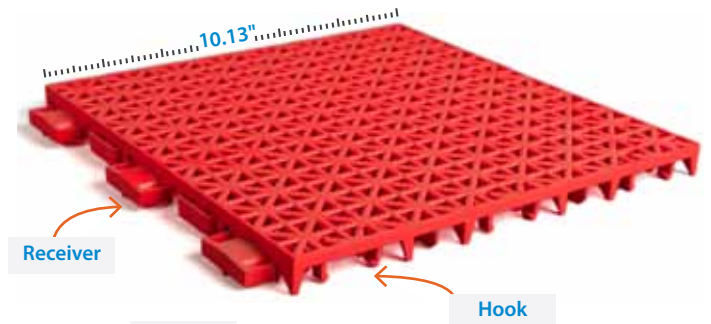


Image 1

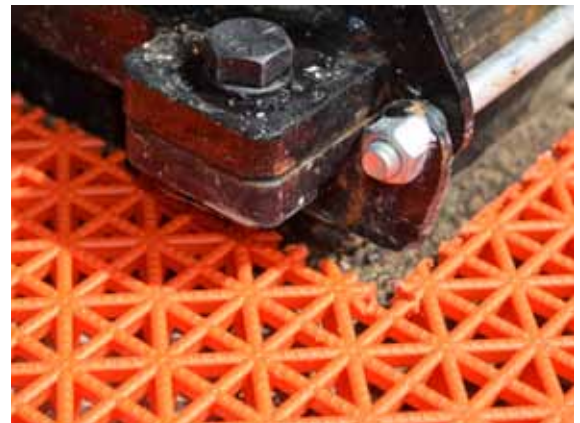


Image 2



Image 3

## INSTALLATION

### BEFORE YOU BEGIN:

#### STEP 1

Review your packing slip and verify all materials are included and have not incurred any damage during shipping. *(See Image 1)*

#### STEP 2

Review your custom, numbered court layout document found in your VersaCourt Installation Packet. *(See Image 2)*

#### STEP 3

Confirm your base is ready for court tile installation and relocate your pallets to the install site.

#### STEP 4

Unpack your tile pallets, remove and discard the plastic and cardboard wraps. *(See Image 3)*

#### STEP 5

We recommend you watch our 15 minute installation video before beginning your project. This video thoroughly illustrates all steps outlined in this instruction manual.

<https://www.youtube.com/watch?v=qqwBezft91E>



Image 1

Layer all the sections out without connecting them first to make sure everything is in proper place and the tile set is straight.

When laying out the sections of tile, position them so the "top" or top edge of the tile are facing the same way as noted on this layout (when facing the basketball goal, to your left and opposite side of the goal).

Lay out sections of the tile as noted on this layout. When all sections are in proper place, you can snap them together and add ramp edges to all four sides of the court.

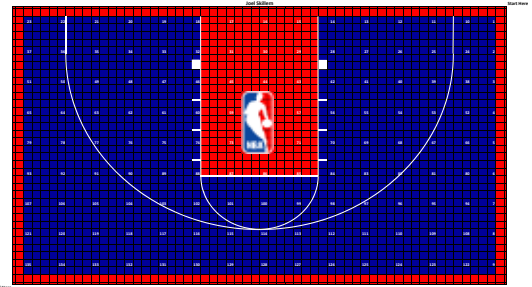


Image 2



To watch our installation video on your mobile device, simply scan the QR code now.



Image 3

## INSTALLING YOUR TILE

### STEP 1

The easiest way to install VersaCourt tile is to start in one corner with the hook end of the tiles facing to the right and down; or in a more basic description "pointing towards the corner". Locate Panel #1 on your diagram and find panel #1 of your tile and simply lay the tile into place. (See Image 1)

Do not snap your tile together on this step. Lay each panel of tile next to each other until your court is fully laid out. You will snap your tiles together in Step 4.

### STEP 2:

Locate Panel #2 and lay into place, continuing in numerical order moving across your diagram until all panels are in place.

### STEP 3:

Step back and visually inspect to ensure sure your sections are in their proper place. Make sure the basketball lane lines up with your goal, as well with any tennis lines, logos and other lines matching your diagram, etc.

### STEP 4:

Snap your tiles together. Starting with #1 and move across your court in the same order you laid the tiles down. By gently stepping on the seams, starting at one corner, the hook ends are pressed into the receiver end for a strong hold. (See Image 2)

**DO NOT USE EXCESSIVE FORCE! THIS WILL CAUSE DAMAGE TO THE VERSACOURT TILES.**

### STEP 5: FOR COURTS 30' X 30' AND SMALLER ONLY

Secure one edge of your basketball court. See Page 6 for instructions on Anchoring Tile To Subsurface.

### STEP 6:

Install your ramps and corner pieces. You will have 2 types of ramps, a receiver end and hook end, and 4 corner pieces. (See Image 4)

### STEP 7:

Remove all the numbered stickers and enjoy your new VersaCourt!



Image 1



Image 2



Image 3

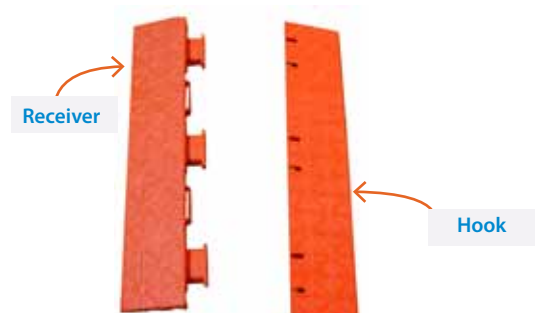


Image 4

## TRIMMING TILE

### TRIMMING TO FIT:

Trimming the tiles to fit along an edge or to go around an obstacle may be necessary in order to fit properly. If this is necessary for your installation there are several options available for cutting the tile.

The tile can be trimmed using a table saw as shown in image 1.

The tile can be trimmed with a hand-held circular saw as shown in image 2. You will need to use a fine tooth blade to keep the saw from chipping the tile. This method works well if you have several tiles that need to be trimmed to the same length.

Another method for trimming tile is a sharp razor knife or box knife as shown in image 3.



Image 1



Image 2

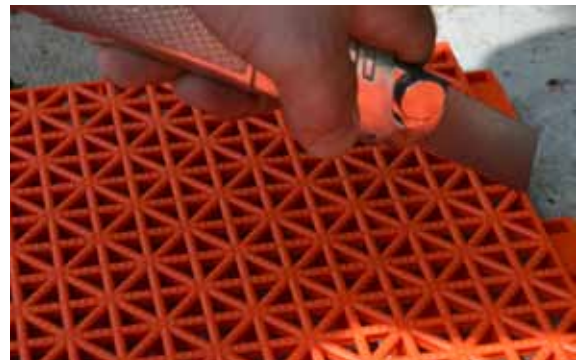


Image 3

## ANCHORING TILE

### ANCHORING TILE TO SUBSURFACE:

Courts which are smaller in size (typically 30' x 30' or less) and see a lot of activity may be susceptible to shifting. It is generally more noticeable on basketball courts. The tiles tend to shift towards the goal, which is caused by continuously running and stopping toward the goal.

### Tools required

- Power Drill - Hammer drill preferred, used for drilling the holes in the concrete and installing the concrete screws in place.
- Concrete screws - Tapcon, 3/16" x 1 3/4", countersink head. The box of screws typically comes with the necessary masonry drill bit.

### STEP 1:

Position the court tiles on the concrete slab so that the court is properly located with respect to the goal and the edges of the court. You will only anchor ONE SIDE of your court (the side OPPOSITE the basketball goal).

### STEP 2:

Using a hammer drill, drill a hole within the center (or middle) locking tab, every other tile along only ONE side of you court (side opposite the basketball goal). Transition ramps will cover these screws. (See image 1)

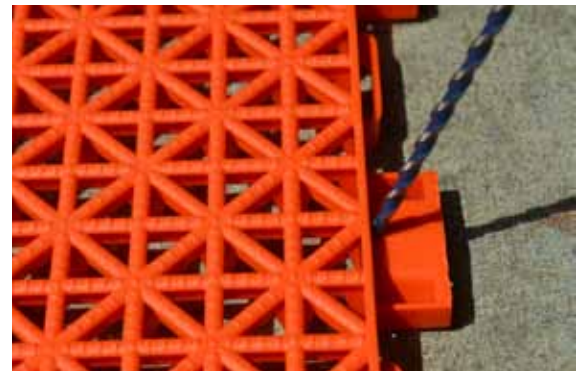


Image 1

***NOTE: DO NOT SECURE ADDITIONAL SIDES OF YOUR COURT WITHOUT FIRST CHECKING WITH VERSACOURT. THEY CAN ADVISE ON WHAT IS BEST FOR YOUR PARTICULAR APPLICATION.***

### STEP 3:

Install the Tapcon anchoring screws. Make sure not to over tighten the screws. (See image 2)

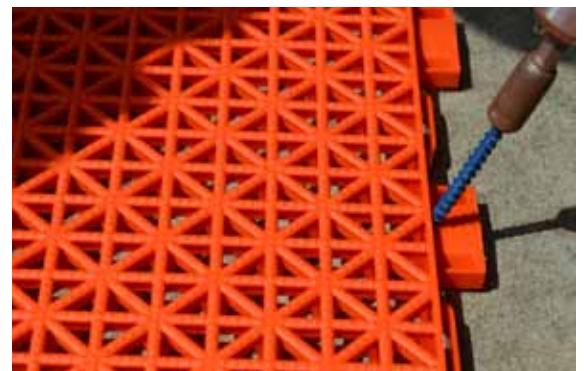


Image 2

### STEP 4:

Install ramps as noted in STEP 6 on PAGE 2 of "INSTALLING YOUR TILE". (See image 3)

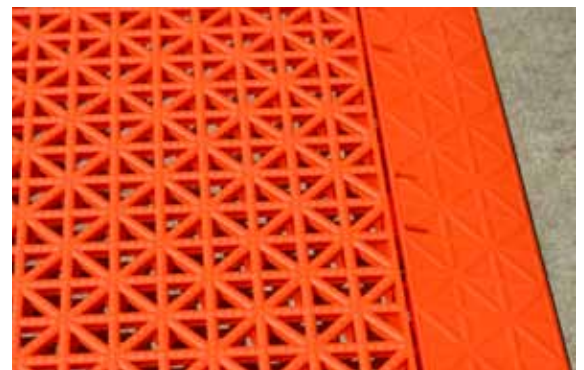


Image 3

## CARE AND MAINTENANCE

### REPLACING TILES:

Tiles are replaced in a matter of seconds. Insert a hook or screwdriver into a hole closest to the corner of the tile which does not have receivers and pull up.

### MAINTENANCE CLEANING:

VersaCourt tile can be cleaned in a variety of ways. If it is an outdoor application, leaves, sticks, and trash can build up on the surface. A leaf blower can be used to remove most debris. If the tile surface is dusty or dirty then a power washer can be used – be sure to set it on a low-pressure setting and do not directly spray the painted lines.

Over time dirt, leaves, rocks and other debris may accumulate under the tile. If this does occur to the point where the tile is full, unsnap the tiles in large sections and slide the tile out of the way to clean the subsurface.

## FOR MORE INFORMATION

You have now completed the installation process for your VersaCourt. If you would like to submit a picture of your finished project email photos to [info@versacourt.com](mailto:info@versacourt.com)

If you encounter any issues during your installation process, feel free to call VersaCourt at 800-540-4899 for advice. We thank you for choosing VersaCourt as your preferred court tile provider. We are confident that you will enjoy many years of fun on your new VersaCourt!

This installation manual is provided for informational purposes only to give the consumer basic understanding of the installation process for VersaCourt products. The following procedures are in accordance with VersaCourt tile installations. VersaCourt makes no warranty as to, and bears no liability for, the content or use of this installation manual. VersaCourt will not be held liable for any "self-installed" court systems. For self-installed court systems, owner assumes all responsibility and liability. VersaCourt representatives will, however, remain available for any questions you may have during your installation.